



we speak  
**projects**

projek  
مشاريع  
projets  
projekte  
项目  
verkefni  
проектон  
u'zduotis

事業  
projekter  
परियोजना  
mashaariic  
πρόγραμμα  
projectos  
progetti

move anything, no matter how large or heavy.

# green gives you the power.

Our years of experience handling over-dimensional and over-weight cargo mean that your project is in excellent hands. We have expert staff who liaise with your engineers and project managers to determine cost-effective ways to move your cargo. We work extensively with you, your factory, and the job site to ensure smooth project execution.

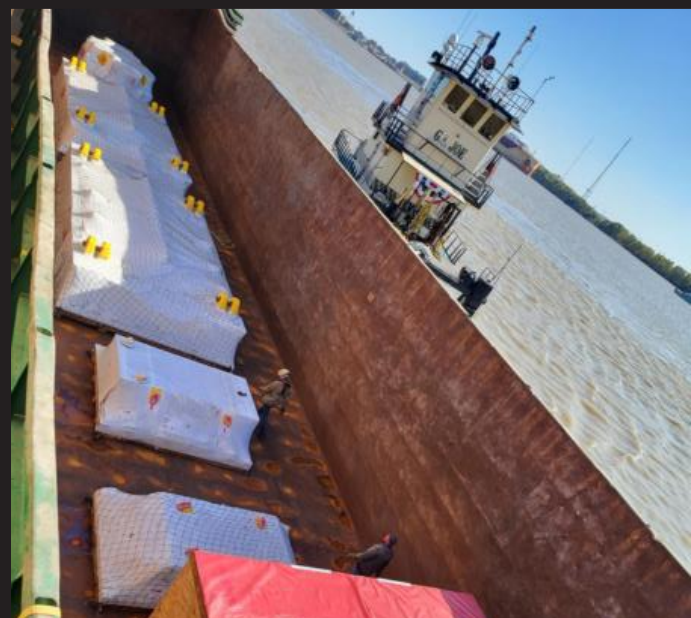
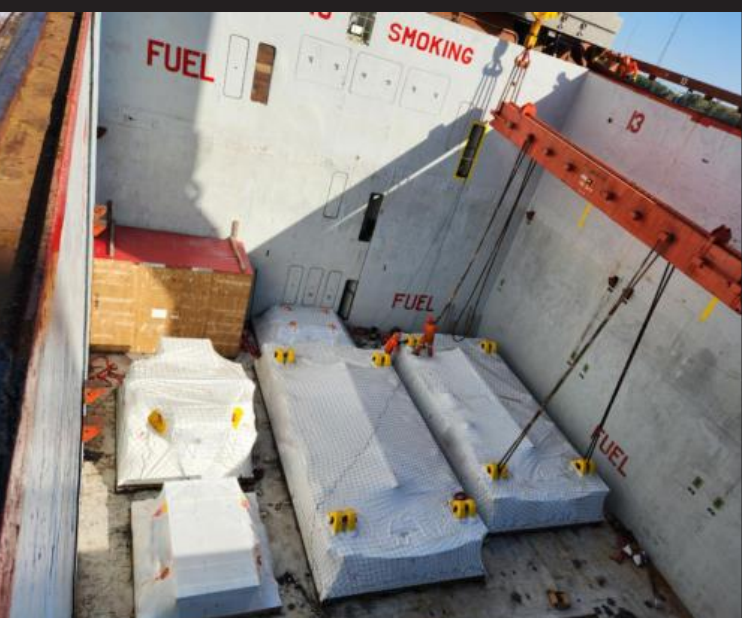
## core competencies

- Power generation equipment
- Paper and pulp-making equipment
- Cranes and hoists
- Marine equipment
- Industrial presses

### Five oversized press machines from Italy to Ohio using intercoastal barge transport

Five oversized press machines ranging from 66,138 to 336,205 lbs. and up to 22 ft long were shipped together on a single vessel from Italy to the Port of New Orleans. Upon discharge, the units were transloaded to barge for intercoastal transport to Kansas, avoiding congested overland routes. When fluctuating water levels at the discharge port caused a four-week delay, the schedule was reworked in real time.

Direct oversight at each transloading point ensured secure handling and allowed delivery ahead of the revised deadline.



Over a period of five months, with tight delivery schedules, the three generators, each weighing more than 674,000 lbs / 305 metric tons, were loaded on container ships. The generators shipped in three separate lots and were loaded by the 350-ton barge-mounted crane, Samson, onto a bed of 40-ft flat racks on board the container vessels.

### **Multiple break bulk and containerized shipments from Houston and Norfolk to a power plant in Korea**



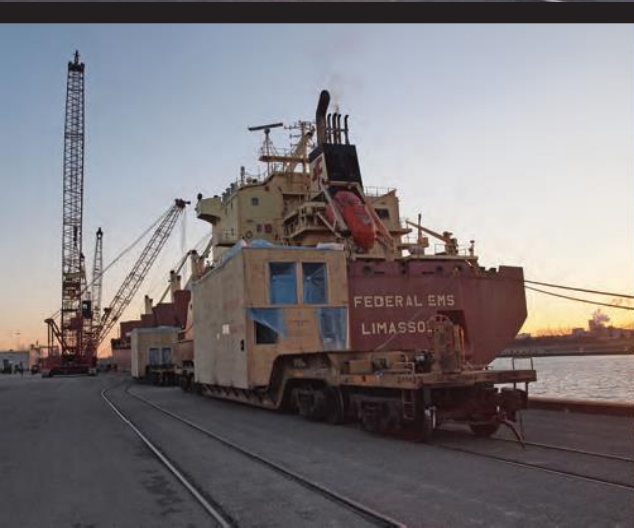


## Multi-Origin Breakbulk Transport: Drilling Equipment from Texas to Ghana

Oversized drilling rig components and support equipment weighing approximately 96,000 lbs. and 80,000 lbs. moved from Houston and Freeport, Texas, to Ghana as part of a coordinated oil and gas equipment project. Multi axle lowboy trailers transported derrick structures, CAT engines, mud pits, and a complete Wilson 42B-500 drilling rig to export staging areas, where heavy lift operations and breakbulk ocean freight accommodated the size and configuration of the cargo for international transport.

## Transporting a kiln from Kentucky to a chemical waste plant in Arkansas

The height (17-ft / 518 cm) and weight (267,500 lbs / 121,300 kg) of the kiln required the use of a truck and barge combination. To reduce height, modifications were made to the shipping saddles allowing the use of a suspension beam trailer. The kiln was trucked to a local barge terminal, rolled on board and secured, then barged up the Ouachita River. A few days of civil work were required to roll-off from the barge and move the last 25 miles to the plant.





### Delivering a 1,850-ton stamping press from Germany to Indiana

Cargo was routed via the port of Burns Harbor and trucked to the plant for installation, except for the crown and bed, which were direct discharged onto railcar and taken to a spur near the plant. There they were offloaded using a gantry crane system onto a 2 x 6-line hydraulic platform trailer configuration. At the site the units were reloaded again onto the rear of the platform trailer because of space constraints inside the installation building.



### Nine evaporator vessels from Zhangjiagang to a Florida paper mill using a self-geared heavy lift ship

Due to the dimensions of the cargo, more than 18 ft / 550 cm wide and high, the main shipment was routed via the Port of Milwaukee. A detailed feasibility study, prepared months in advance, identified all overhead obstructions and established the transportation plan needed to obtain permits.



The first phase involved moving an oversized cable reel valued at \$1.9M and measuring 210 x 181 x 181 inches. With less than 24 hours to mobilize, route surveys were completed, cranes and bucket trucks were secured, and specialized heavy-haul equipment was dispatched to deliver the reel to the Port of Houston. When the vessel departure was delayed, eight days of on-dock staging were arranged, and the reel was rolled on at the first available window without re-handling or added cost.

Phase two followed shortly after with a second cable reel of equal size and value. Green booked assets and permits in advance of a holiday port closure, staged the reel on a MAFI trailer, and secured roll-on loading at the first post-holiday window. Both phases were completed without demurrage, detention, or compliance issues, keeping the reels secure and load-ready throughout schedule changes

### **Two-Phase Cable Reel Transport from Houston to Oslo via Port of Houston**





### **Azipod and parts from Italy to Houston for repair**

The main thruster, weighing 361,500 lbs / 164 metric tons and measuring 26-ft 7-in / 810 cm tall was discharged by floating crane onto a 10-line hydraulic platform trailer, hauled to the repair facility, placed on stands and subsequently jacked down onto sets of industrial rollers for placement inside the building.

## Transporting a 16-ton aluminum can decorator from Colorado to Saudi Arabia

Measuring 5.9 m × 2.54 m × 4 m and weighing 16 tons, the \$1.3M machine required crane loading onto a flat rack and custom restraints to secure it for transit. A

carrier was selected that could accommodate the cargo's height and maintain the required 16-day delivery window. The unit was routed from Centennial, Colorado, to the port, loaded for ocean transport, and monitored through real-time coordination to allow adjustments for potential delays. The machine arrived in Dammam on schedule, keeping the client's production plan intact.





### **80-ton disc dryer from Denmark to Alabama using breakbulk Ro-Ro transport**

The 80-ton disc dryer was shipped from Denmark and discharged in Jacksonville for heavy-haul drayage to Alabama. Customs entry and ISF were keyed in advance to clear prior to vessel arrival. Local, state, and federal permits were obtained, and route surveys ensured compliance with oversize regulations. The unit was delivered directly to the plant for installation, keeping the project on schedule.

### **600 tons of tile manufacturing equipment from Italy to USA**

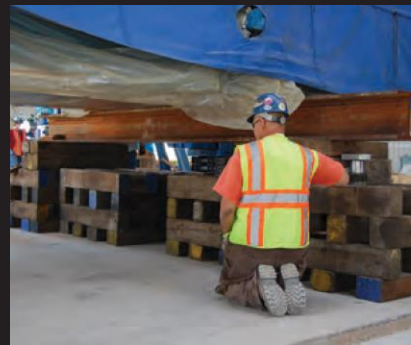
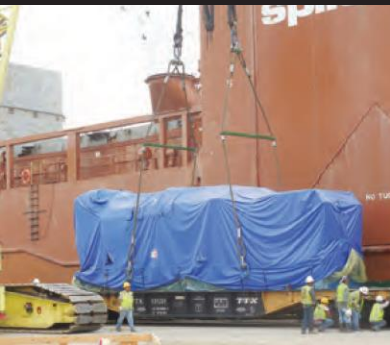
Three 109-ton units and additional machinery were imported from two countries and routed via U.S. ports. Customs entry was keyed in advance, permits and clearances were secured, and the equipment was delivered to the construction site on schedule to support the plant's build timeline.





 greenworldwide®  
SHIPPING





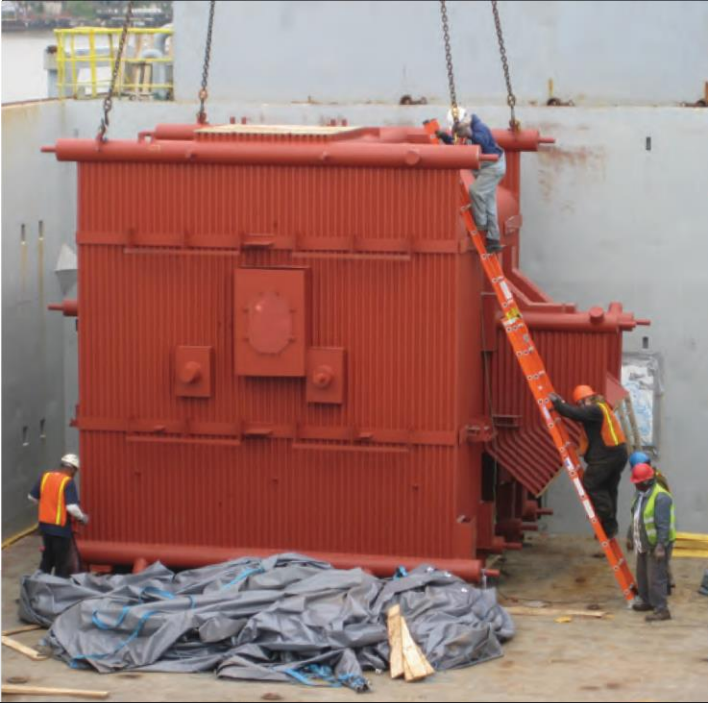
### **Eighteen generator sets and 150 truck loads of auxiliary parts for a Texas power plant**

The 151-ton gensets were moved by rail to a suitable siding, transloaded onto an 8-line hydraulic platform trailer using gantry cranes, and trucked to their destinations. At the power plant, the gensets were off-loaded using a hydraulic jack and skid system, positioned over their respective foundations, and jacked down to a rough set position.

### **Multiple shipments from northern Europe for a biomass-fueled power plant in Wisconsin**



Due to the dimensions of the cargo, more than 18 ft / 550 cm wide and high, the main shipment was routed via the Port of Milwaukee. A detailed feasibility study, prepared months in advance, identified all overhead obstructions and established the transportation plan needed to obtain permits.



## Transporting oversized industrial units from Indiana to a Utah data center

The size (390" × 93" × 111") and weight (approximately 12,000 lbs each) of more than 80 industrial units required specialized equipment and route planning for transport from Indiana to Utah over a four-to six-month period. Step deck Conestoga trailers were selected to provide the necessary clearance for the oversized skids while maintaining enclosed protection during transit. Route surveys and delivery sequencing were coordinated in advance to ensure regulatory compliance, prevent site congestion, and maintain uninterrupted deliveries aligned with construction milestones at the destination data center..





## Executing time-critical flat-rack equipment delivery from port to plant

Cargo was discharged from vessel and moved immediately for same-day transload at Green's Savannah facility to preserve the delivery schedule tied to production startup requirements. Green coordinated drayage, warehouse handling, and outbound equipment in advance to maintain control through the physical transfer from flat-rack to inland conveyance. By sequencing each handoff internally and minimizing dwell between discharge and dispatch, the shipment remained aligned to the required plant delivery window.

**Windmill equipment from Tianjin, China via the Port of Houston to a job site in Wisconsin**



**Disc dryer shipped from Scandinavia to the US, then transported on a 19-axle truck to a poultry plant in Delaware**

The logistics of moving this 100-ton (220,000 lbs) component required extensive planning and coordination due to very limited space at the construction site.



**Paper dryer on two 6-line hydraulic platform trailers**

Weighing in at 185,000 lbs, a central bed extension was required to keep the 17.5-ft height at a minimum for the 25-mile route to the port. Local and state police as well as numerous bucket trucks from various utility companies escorted the load.



# services

Air Freight  
Barge  
Cargo Survey  
Consulting  
Customs Clearance  
Feasibility Studies  
Heavy lift  
Loading/Discharge Supervision  
Materials and Inventory  
Management Ocean Freight  
Packing and Warehousing  
Rigging and Crane Services  
Ro/Ro  
Road Transport  
Route Surveys  
Specialized Rail Services  
Supply Chain Visibility  
Vessel Charter

**BOTTOM LINE,**  
**we speak freight**

**ITS TIME TO MOVE FREIGHT  
*FORWARD***



**greenworldwide<sup>®</sup>**  
SHIPPING